

60A St Alban's Road EH9 2LX

Planning Application 21/01599/FUL

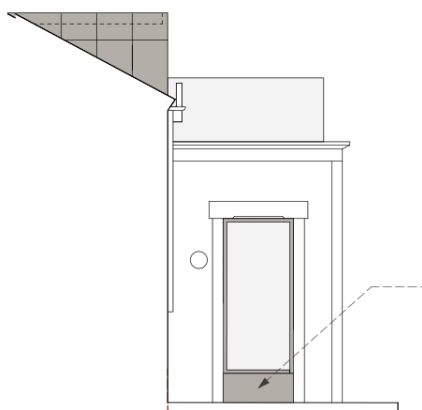
OBJECTION from Grange Association

6 May 2021

This application is for a dormer with roof terrace, together with relocation of the front door. While we do not object to the relocation of the door, we do object to the proposed form and materials of the window that will replace the door. The fenestration of the villas, of which this flat forms a part, is consistent in its principal elevation in having 1-over-1 sash and case white-painted timber windows.



60A St Alban's Road EH9 2LX – Google streetview, June 2008



*Proposed south elevation –
Aluminium framed window with
zinc infill below*

We request that the applicant be invited to reconsider the form and materials of the replacement window. We would wish this to be a timber 1-over-1 (if only with a false astragal) with a stone cill below, to match the rest of the frontage, rather than the zinc proposed.

We have discussed our request with the applicant who has agreed to raise it with her architect.

Grange Association
6 May 2021