



TRO/21/14: Parking restrictions at Oswald Road / Charterhall Road / Cluny Gardens junction

Administrator

Posts: 245

Registered

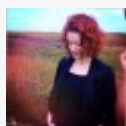
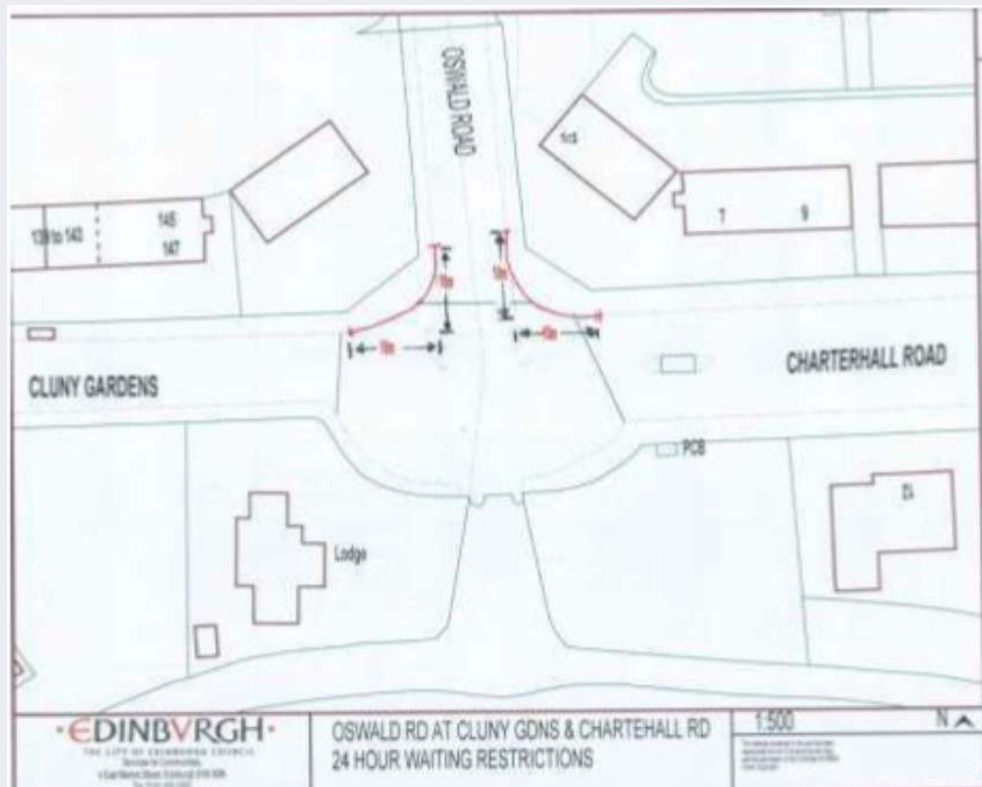
:

April 4, 2018,

13:36

TRO/21/14 has been issued for [first stage consultation](#), with [this \(rather poor resolution\) drawing](#) showing proposals to add double yellow lines to the corners at the southern end of Oswald Road, where it meets Charterhall Road and Cluny Gardens.

Comments can be submitted to TRO.Consultations@edinburgh.gov.uk by 25 February 2022. In the light of comments, the Council's Roads team will decide whether to proceed to advertise the order, in which case it will move to the [list of advertised orders](#).



TRO/21/14: Parking restrictions at Oswald Road / Charterhall Road / Cluny Gardens junction

Newbie

Posts: 2

Thanks. This seems a sensible proposal to remove parked cars from opposite the entrance to the playground at Blackford Pond.

Registered:

February 7, 2022, 08:07

Pages: **1**